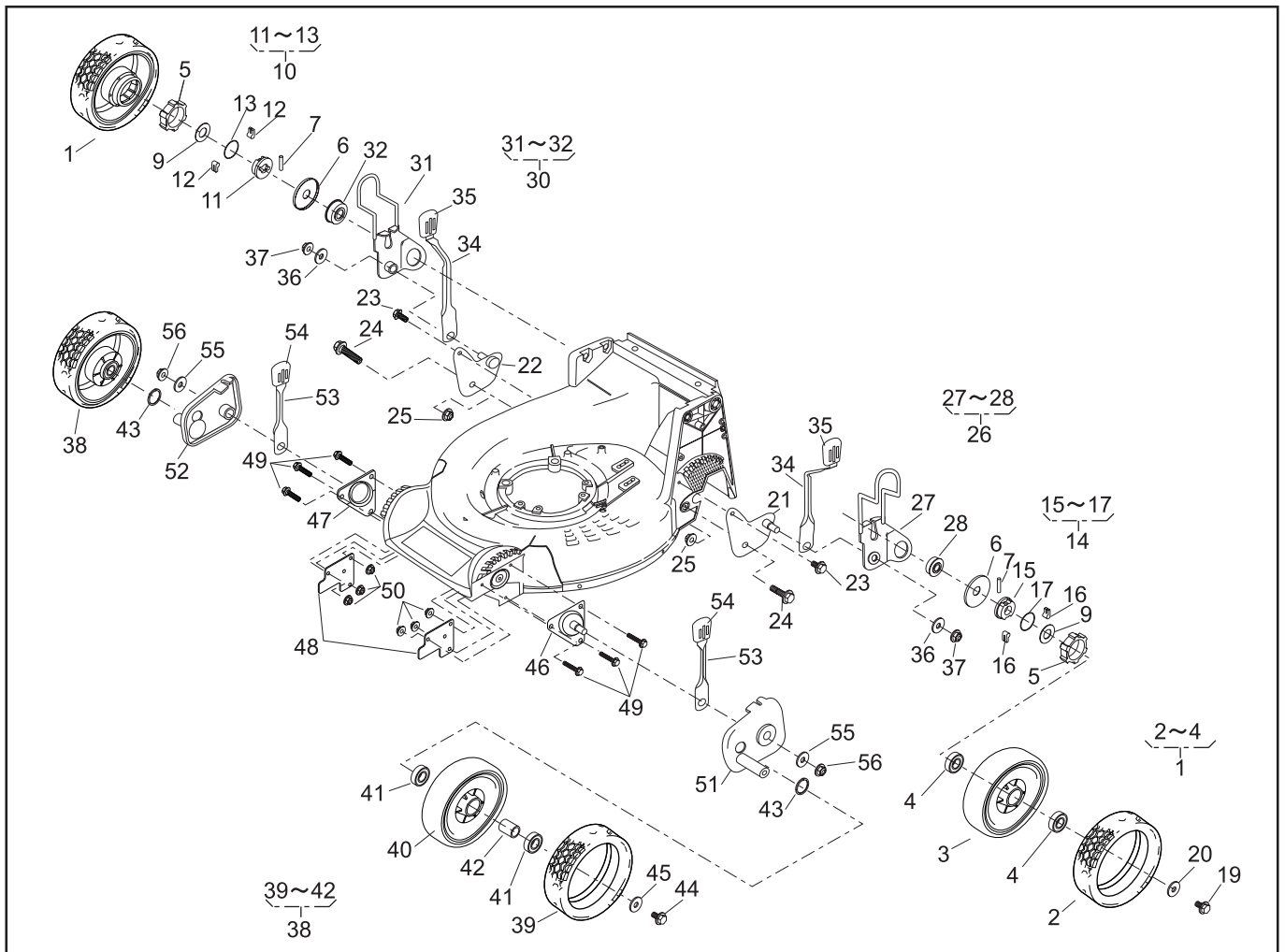




## **TOSAERBA SARP**

### **SLM-5360HXA**

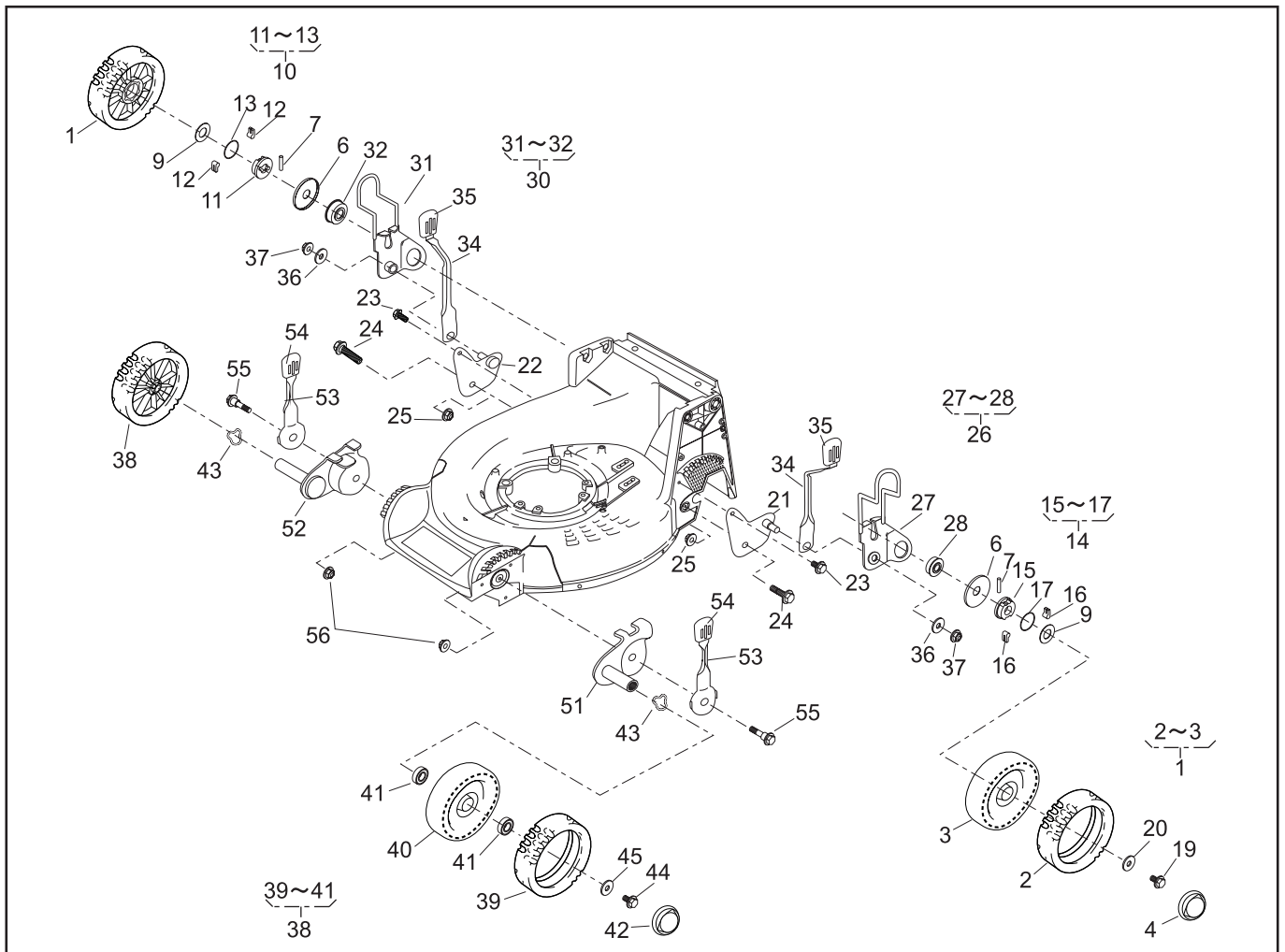
## **ESPLOSO RICAMBI**



## PARTS LIST

46014-224

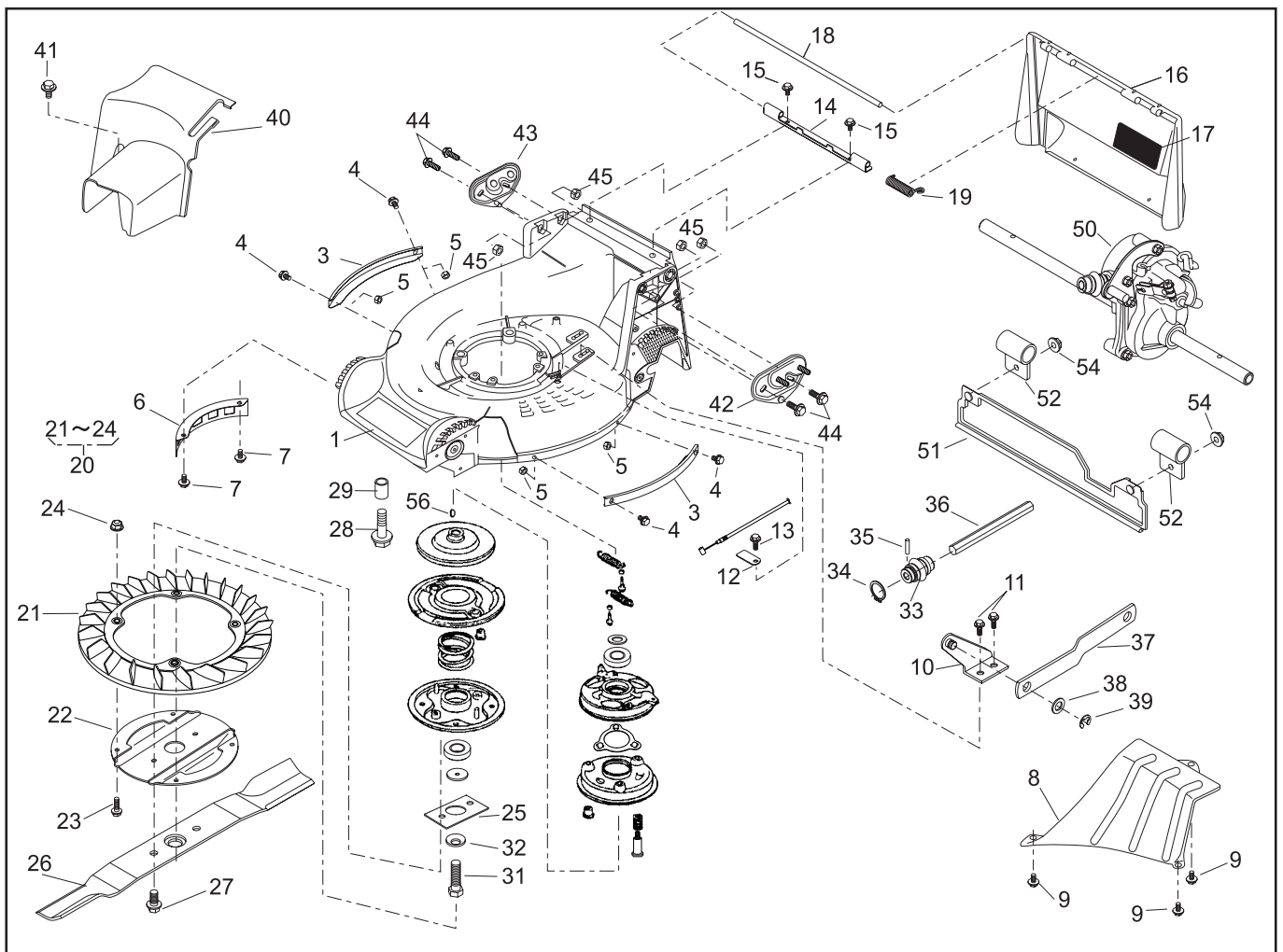
REF. No.	PARTS No.	PARTS NAME	8"AI-WHEEL			1/2	Feb.07,2005
			Q'TY INCLUDING	PRICE( )	RECOMM.(%) Lot.100	REMARKS	
1	71041   136	WHEEL ASSY(A.W.)	2				
2	91086   113	TIRE	2				
3		WHEEL	2				
4	916B   6002	BEARING	4				
5	11086   119	STOPPER	2				
6	61003   112	THRUST PLATE	2				
7	31034   137	PIN	2				
8							
9	68036   146	WASHER	2				
10	71158   101	RATCHET ASSY(R)	1				
11	11102   138	HOLDER	1				
12	31034   170	PIN	2				
13	68013   266	SPRING	1				
14	71158   102	RATCHET ASSY(L)	1				
15	11102   138	HOLDER	1				
16	31034   170	PIN	2				
17	68013   266	SPRING	1				
18							
19	31057   181	HEXAGON BOLT	2				
20	68036   101	WASHER	2				
21	11006   151	STAY C.P.(RL)	1				
22	11006   152	STAY C.P.(RR)	1				
23	342L   0612	FLANGE BOLT TAPPING	2				
24	31057   255	HEXAGON BOLT	2				
25	569L   0800	FLANGE NYLON NUT	2				
26	71122   112	ADJUSTER ASSY(L)	1				
27	11142   131	ADJUSTER(RL)	1				
28	945L   0349	BEARING	1				



## PARTS LIST

46014-223

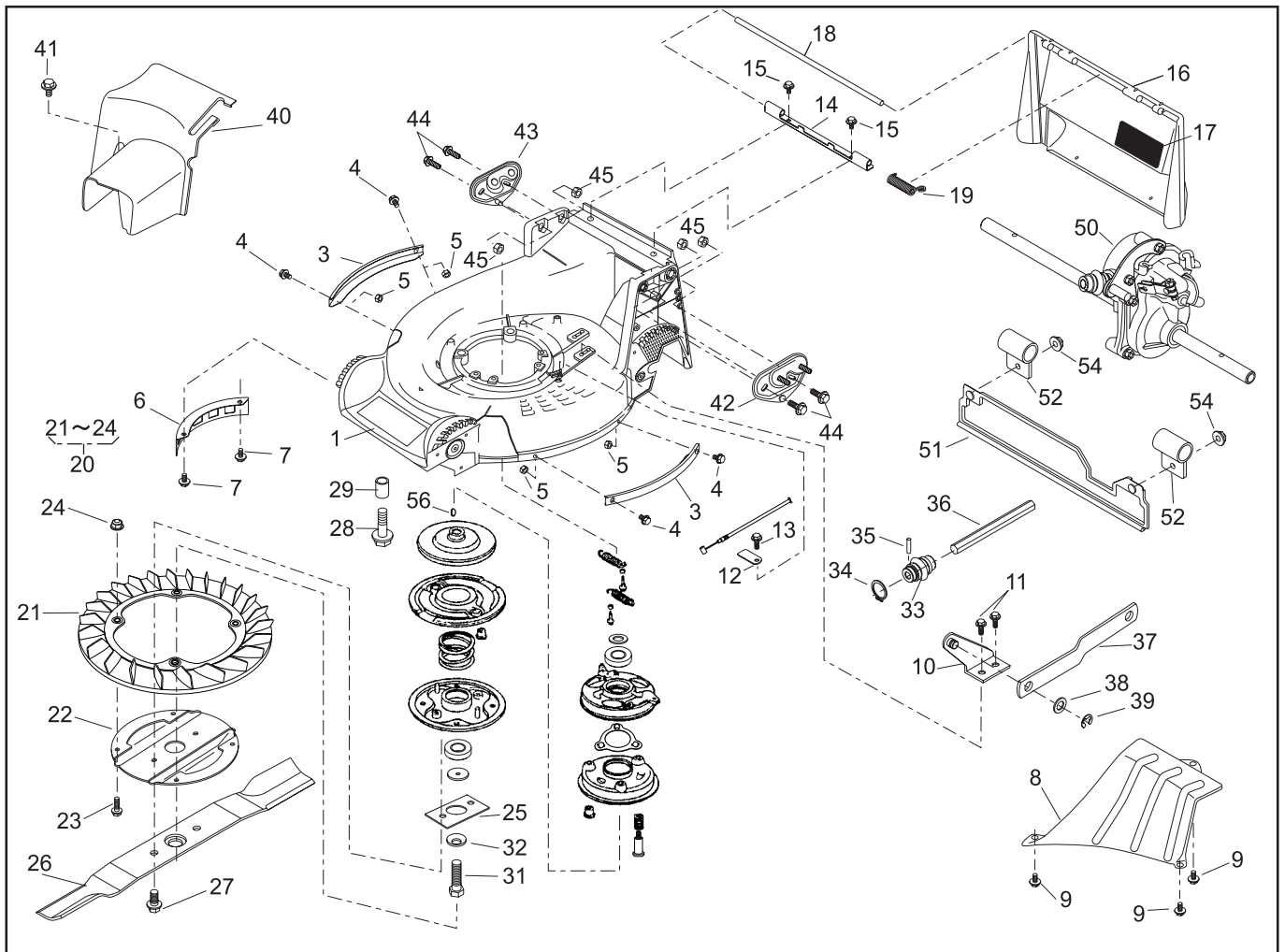
REF. No.	PARTS No.	PARTS NAME	WHEEL			2/2	Feb.07,2005	REMARKS
			Q'TY INCLUDING	PRICE( )	RECOMM.(%) Lot.100			
29								
30	71122   113	ADJUSTER ASSY(R)	1					
31	11142   132	ADJUSTER(RR)	1					
32	945L   0349	BEARING	1					
33								
34	11150   105   09	ADJUST LEVER	2					
35	36061   121	KNOB	2					
36	613L   0800	WASHER	2					
37	569L   0800	FLANGE NYLON NUT	2					
38	71041   103	WHEEL ASSY	2					
39	91086   102	TIRE	2					
40	36107   102	WHEEL	2					
41	932L   0696	BEARING		4				
42	36070   110	CAP	2					
43	664V   0626	WAVE SPRING WASHER	2					
44	31057   181	HEXAGON BOLT	2					
45	68036   101	WASHER	2					
46								
47								
48								
49								
50								
51	11142   134	ADJUSTER(FL)	1					
52	11142   135	ADJUSTER(FR)	1					
53	11150   107   09	ADJUST LEVER	2					
54	36061   121	KNOB	2					
55	31057   260	HEXAGON BOLT	2					
56	569L   0800	FLANGE NYLON NUT	2					



## PARTS LIST

46014-234

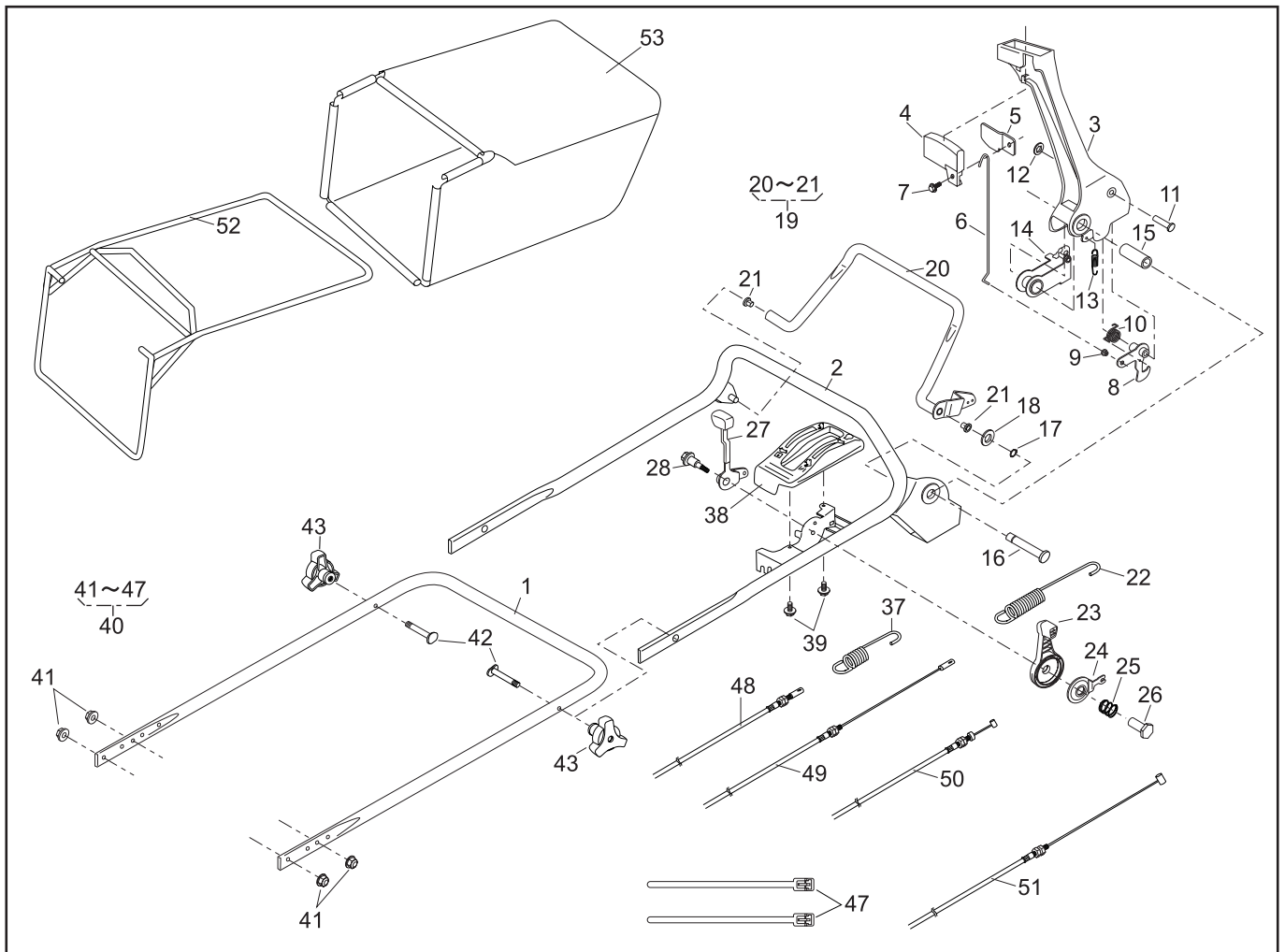
REF. No.	PARTS No.	PARTS NAME	GRASS-CUTTING		PRICE( )	1/2	RECOMM.(%) Lot.100	Feb.09,2005	REMARKS
			Q'TY	INCLUDING					
1	51043   147   42	HOUSING	1						
2									
3	51090   117   09	PROTECTOR	2						
4	335L   0616	FLANGE BOLT	4						
5	512L   0600	HEXAGON NUT	4						
6	36065   180	COVER	1						
7	342L   0612	FLANGE BOLT TAPPING	2						
8	36065   436	COVER	1						
9	342L   0612	FLANGE BOLT TAPPING	3						
10	11006   155	STAY C.P.	1						
11	342L   0612	FLANGE BOLT TAPPING	2						
12	11113   407	STAY	1						
13	342L   0612	FLANGE BOLT TAPPING	1						
14	11113   292	STAY	1						
15	342L   0612	FLANGE BOLT TAPPING	2						
16	36068   196   46	GUARD	1						
17	36080   149	RUBBER SHEET	1						
18	64014   324	SHAFT	1						
19	68013   336	SPRING	1						
20	71082   111	FAN ASSY	1						
21	51125   103	FAN		1					
22	11102   151	HOLDER		1					
23	31062   169	PRE-COAT LOCK BOLT		4					
24	579L   0600	FLANGE NUT		4					
25	61024   208	SPACER	1						
26	91014   159   59	BLADE	1						
27	31057   197	HEXAGON BOLT	2						
28	31057   243	HEXAGON BOLT	4						



## PARTS LIST

46014-234

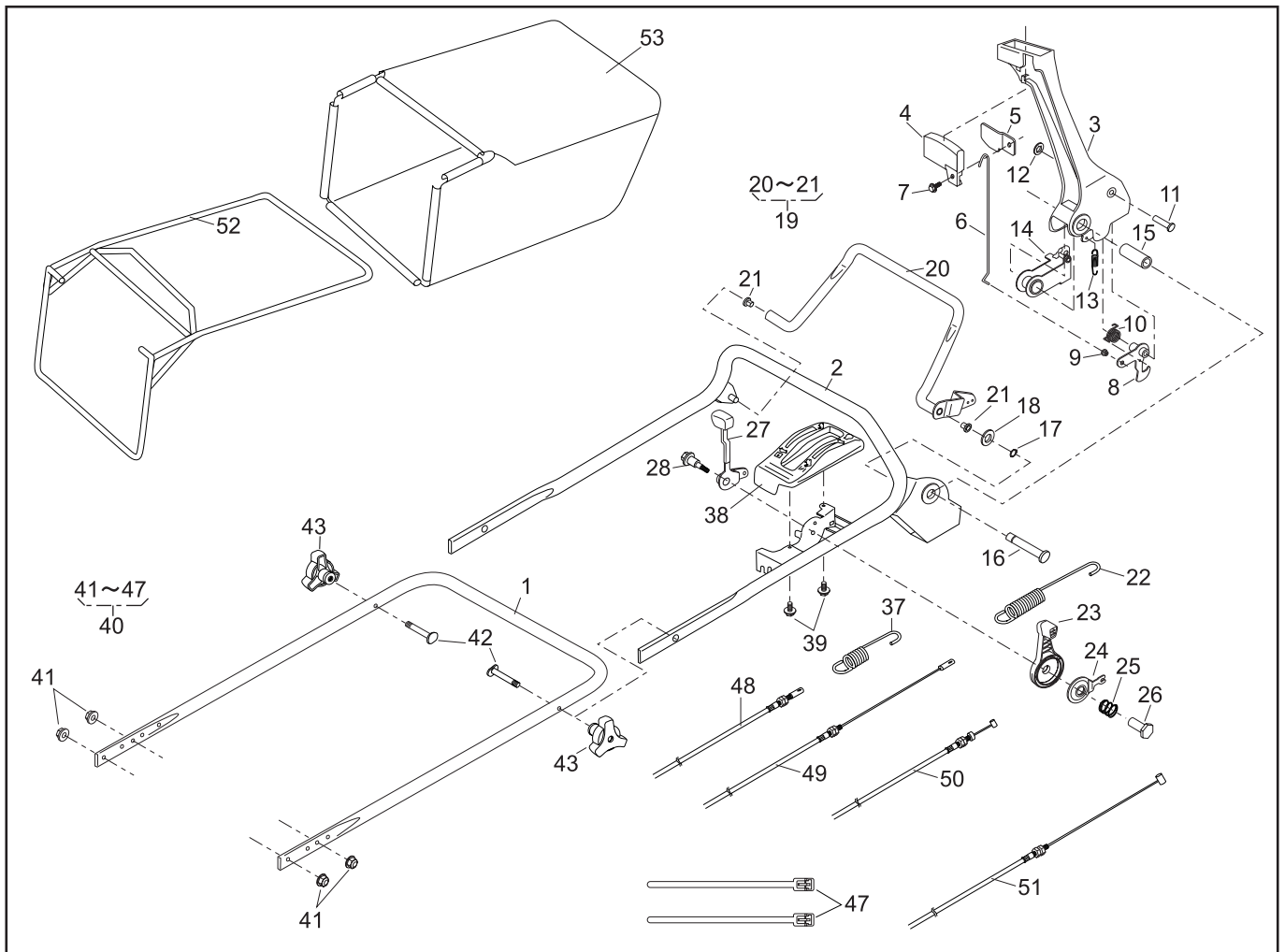
REF. No.	PARTS No.	PARTS NAME	GRASS-CUTTING			2/2	Feb.09,2005
			Q'TY	PRICE( )	RECOMM.(%)	REMARKS	
			INCLUDING		Lot.100		
29	61024   142	SPACER	3				
30	71067   106	BRAKE ASSY	1				
31	31057   196	HEXAGON BOLT	1				
32	671V   1000	CONICAL SPRING WASHER	1				
33	91097   101	UNIVERSAL JOINT	1				
34	812V   2000	C-SNAP RING FOR SHAFT	1				
35	717B   0418	PARALLEL PIN	1				
36	64014   358	SHAFT	1				
37	91049   132	CONNECTOR	1				
38	68036   280	WASHER	1				
39	816V   0800	E-SNAP RING	1				
40	36065   438	COVER	1				
41	342L   0616	FLANGE BOLT TAPPING	1				
42	51116   149	HANDLE BRACKET(L)	1				
43	51116   150	HANDLE BRACKET(R)	1				
44	31057   255	HEXAGON BOLT	4				
45	512L   0800	HEXAGON NUT	4				
46							
47							
48							
49							
50	71008   275	GEAR CASE ASSY	1				
51	36046   150	SAFETY GUARD	1				
52	11012   126	HANGER BAND	2				
53							
54	569L   0600	FLANGE NYLON NUT	2				
55	122039	ENGINE:HONDA GXV160H2-SFL1-R280	1				
56		WOOD RUFF KEY	1				



## PARTS LIST

46014-250

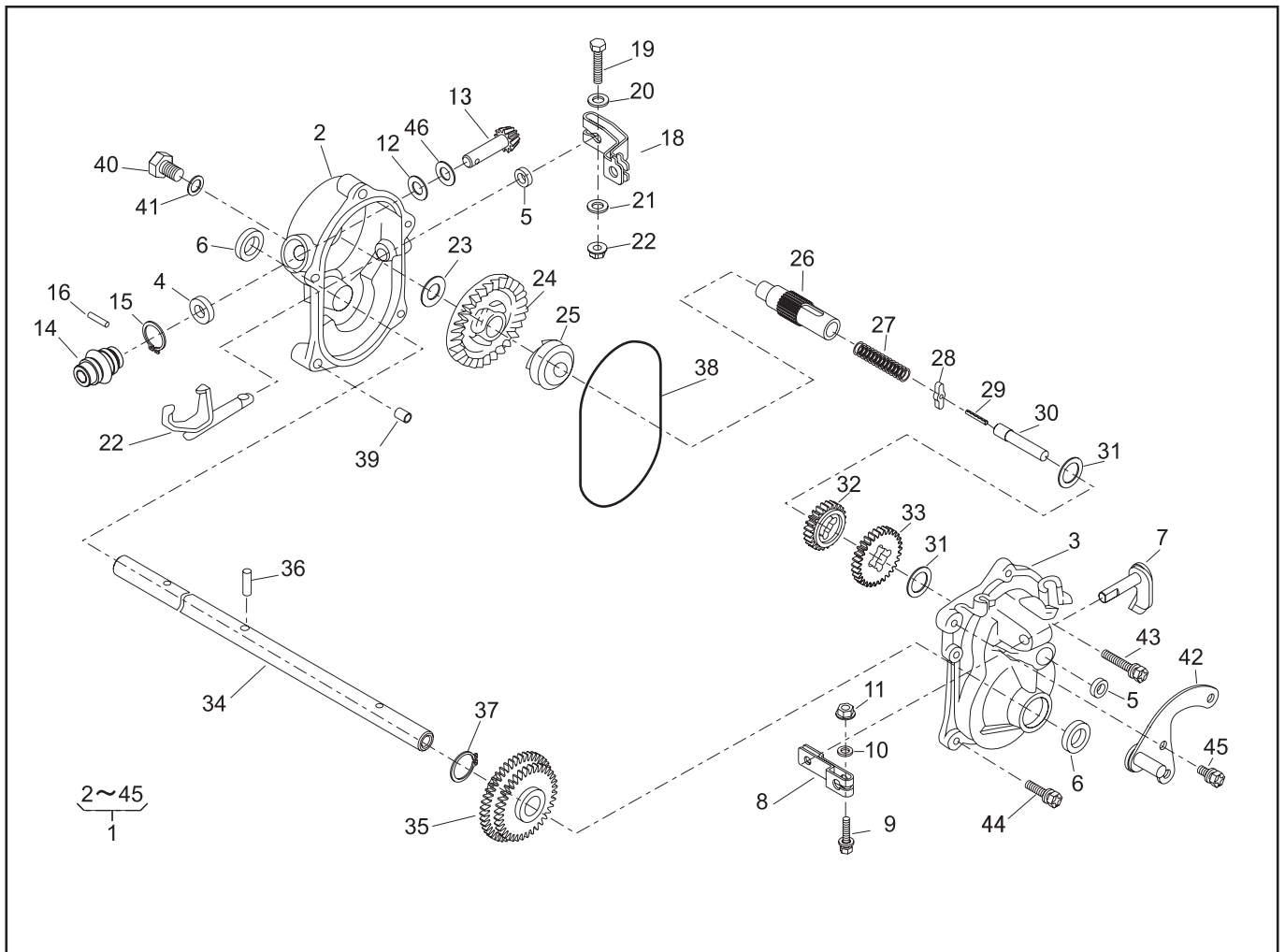
REF. No.	PARTS No.	PARTS NAME	HANDLE			1/2	RECOMM.(%) Lot.100	Feb.08,2005	REMARKS
			Q'TY	INCLUDING	PRICE( )				
1	51027   254	HANDLE	1						
2	51027   255	HANDLE	1						
3	11095   172	LEVER(BBC)	1						
4	36110   102	BUTTON	1						
5	11049   109	SLIDE PLATE	1						
6	64014   336	SHAFT	1						
7	335N   0612	FLANGE BOLT	1						
8	71203   135	ARM C.P.	1						
9	76007   183	BUSH	1						
10	68013   371	SPRING	1						
11	31056   127	GIB-HEADED PIN	1						
12	576V   0600	PUSH NUT	1						
13	68013   372	SPRING	1						
14	11109   111	LINK	1						
15	61023   190	SLEEVE	1						
16	64014   337	SHAFT	1						
17	812V   0800	C-SNAP RING FOR SHAFT	1						
18	613L   0800	WASHER	1						
19	71161   114   09	LEVER ASSY	1						
20		LEVER		1					
21	76007   131	BUSH		2					
22	68013   374	SPRING	1						
23	91010   169	THROTTLE LEVER(GXV120/GXV160)	1						
24	61003   113	THRUST PLATE	1						
25	68013   356	SPRING	1						
26	31058   168	NUT	1						
27	11095   117	LEVER	1						
28	31062   109	PRE-COAT LOCK BOLT	1						



## PARTS LIST

46014-250

REF. No.	PARTS No.	PARTS NAME	HANDLE		2/2	Feb.08,2005
			Q'TY INCLUDING	PRICE( )		
29						
30						
31						
32						
33						
34						
35						
36						
37	68013   161	SPRING	1			
38	71900   796	COVER ASSY	1			
39	470L   0514	(+)TAPPING SCREW	2			
40	71900   895	BOLT SET	1			
41	569L   0800	FLANGE NYLON NUT	4			
42	31057   134	BOLT	2			
43	36061   118	KNOB	2			
44						
45						
46						
47	68028   103	WIRE BAND	2			
48	91003   125	CONTROL CABLE	1			
49	91003   170	CONTROL CABLE	1			
50	91001   329	THROTTLE WIRE(GXV120/GXV160)	1			
51	91003   169	CONTROL CABLE(BBC)	1			
52	11062   178	FRAME C.P.	1			
53	36098   136	GRASS BAG C.P.(Black)	1			
54						
55						
56						



## PARTS LIST

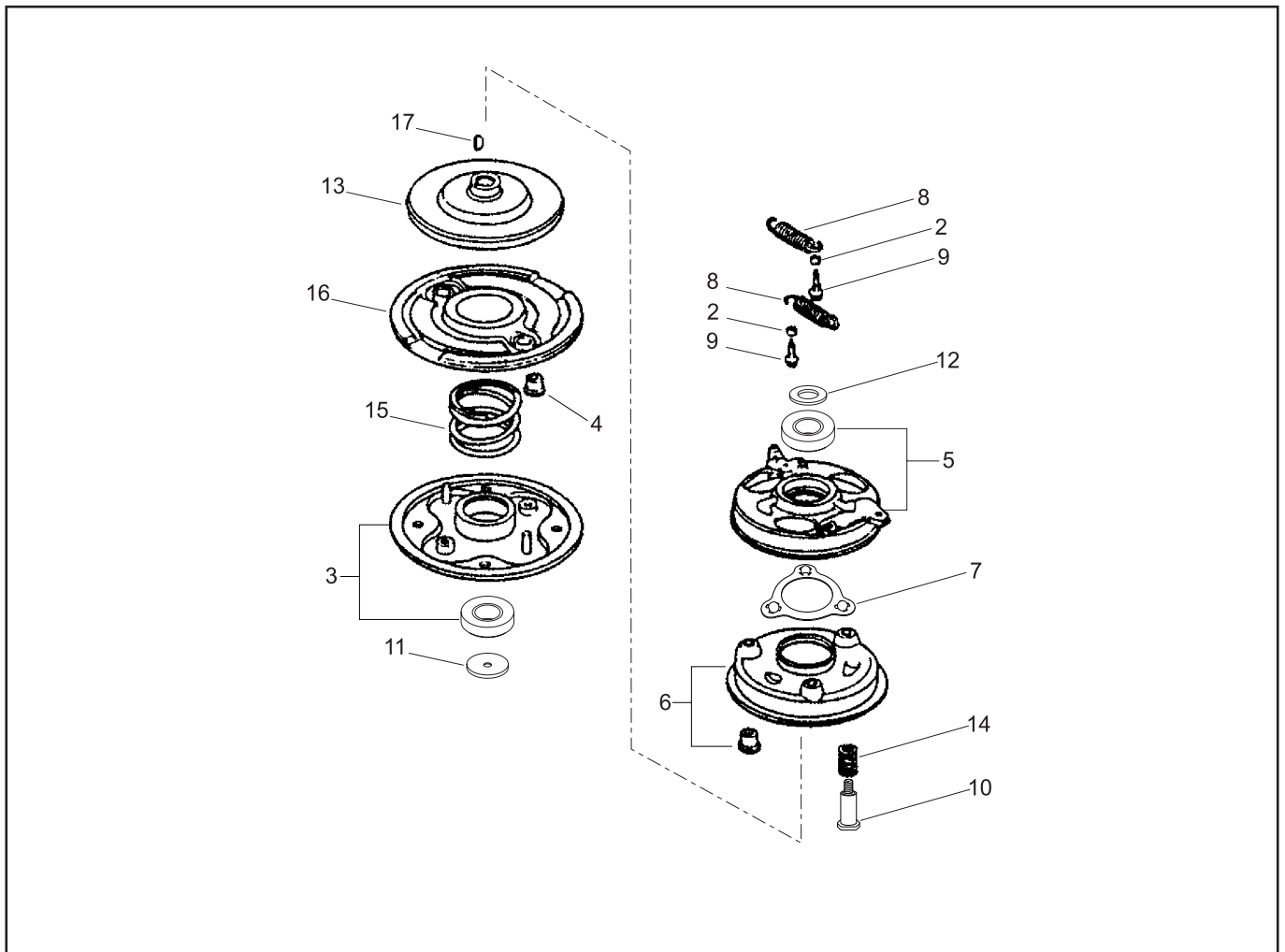
### GEAR CASE ASSY (71008-275)

46014-262

REF. No.	PARTS No.	PARTS NAME	GEAR CASE		PRICE( )	1/2		REMARKS
			Q'TY INCLUDING			RECOMM.(%) Lot.100	Feb.07,2005	
1	71008   275	GEAR CASE ASSY	1			-		
2	51001   195	GEAR CASE	1			3		
3	51001   196	GEAR CASE	1			3		
4	61002   161	OIL SEAL	1			5		SD 10 20 5
5	61002   162	OIL SEAL	2			5		SD 8 14 4
6	61002   163	OIL SEAL	2			5		SD 15 24 5
7	64024   104	THIFTER SHAFT	1			3		
8	11104   119	ARM	1			3		
9	320L   0525	HEXAGON BOLT(PW)	1			3		M5 × 25
10	611L   0500	PLAIN WASHER	1			3		M5
11	571L   0500	FLANGE NUT	1			3		M5
12	61003   109	THRUST PLATE	1			5		
13	78003   130	PINION	1			3		
14	91097   101	UNIVERSAL JOINT	1			3		
15	812V   2000	C-SNAP RING FOR SHAFT		1		1		φ 20
16	717B   0418	PARALLEL PIN		1		3		φ 4 × 18
17	11097   106	SHIFTER FORK	1			3		
18	11104   137	ARM	1			3		
19	311M   0630	(+)HEXAGON BOLT	1			3		M6 × 30
20	611L   0600	PLAIN WASHER	1			3		M6
21	613L   0600	PLAIN WASHER	1			3		M6
22	571L   0600	FLANGE NUT	1			3		M6
23	61024   117	SPACER	1			5		
24	78001   162	BEVEL GEAR	1			3		
25	11129   107	CLUTCH	1			3		
26	64014   236	SHAFT	1			3		
27	68013   262	SPRING	1			3		







## PARTS LIST

### BRAKE ASSY (71067-106)

46014-266

REF. No.	PARTS No.	PARTS NAME	BBC		1/1	RECOMM.(%) Lot.100	REMARKS
			Q'TY	PRICE( )	Feb.09,2005		
			INCLUDING				
1	71067 106	BRAKE ASSY	1			-	
2	19512 883 000	FAN COLLAR	2			-	
3	72600 VA4 010	BLADE HOLDER ASSY	1			3	
4	72613 VA4 000	BLADE HOLDER BUSH	2			5	
5	75090 VA4 030	BALL CONTROL PLATE	1			10	
6	75100 VA4 010	BRAKE C.P.	1			3	
7	75110 VA4 000	BALL RETAINER C.P.	1			10	
8	75182 VA3 J00	CLUTCH RETURN SPRING	2			5	
9	90014 952 000	FLANGE BOLT	4			3	
10	90021 VA4 000	SPECIAL BOLT	3			3	
11	90409 952 000	WASHER	1			3	
12	90501 952 010	THRUST WASHER	1			3	
13	75130 VA4 000	DRIVE DISK	1			3	
14	75132 VA4 000	BRAKE HOLDER SPRING	3			5	
15	75183 VA3 J00	CLUTCH SPRING	1			3	
16	75150 VA3 J01	DRIVEN DISK C.P.	1			3	
17	94401 16150	WOOD RUFF KEY	1			15	
18							
19							
20							
21							
22							
23							
24							
25							
26							
27							
28							